

## Pik Emma (Proposed name)

Djangart Valley near Ak Shirak

N 41.69426

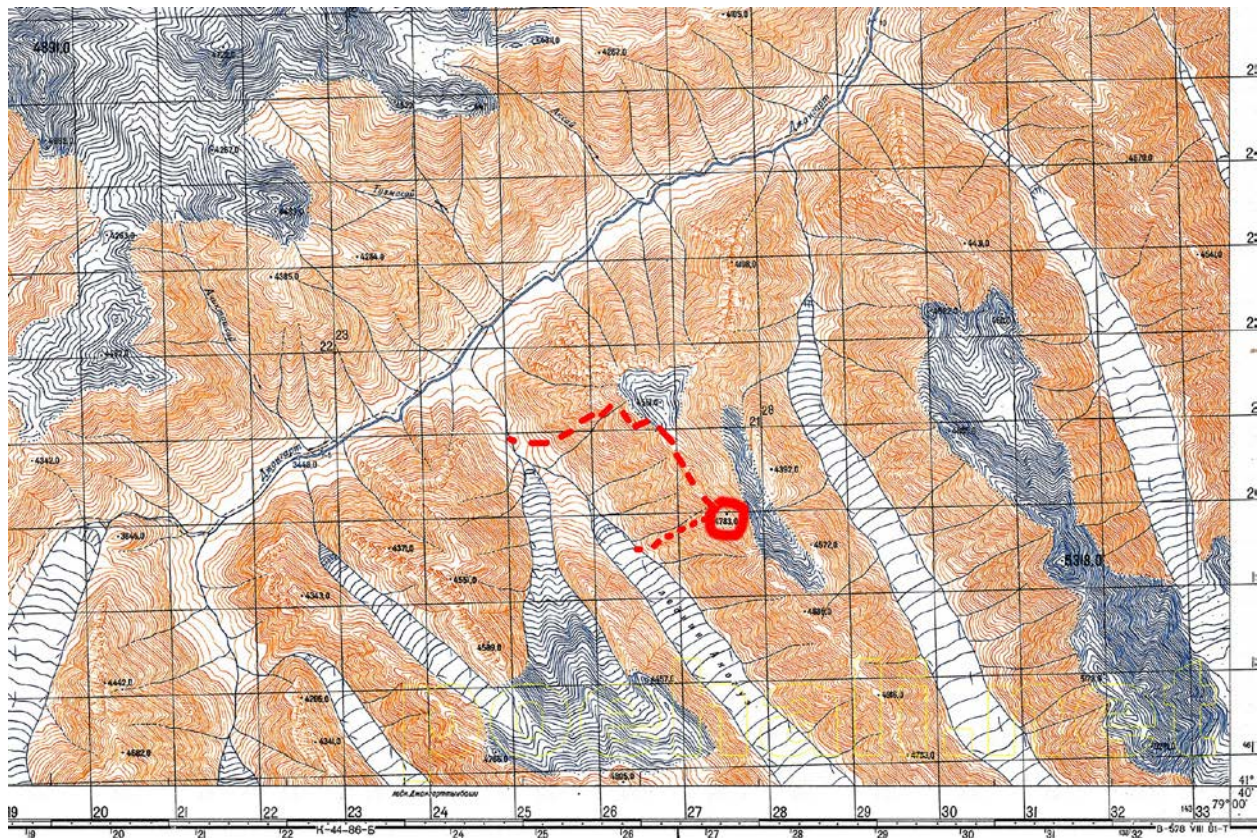
E 078.92930

Map Height 4783m

GPS Height 4803m

Alex Brighton and Richard Tremellen

22<sup>nd</sup> July, 2011



## North Ridge (AD)

Our route climbed from the Djangart valley, ascending a wide couloir on the west flank of Pt4561, though we never went to the summit of this mountain. We then followed the ridge line south, over Pt4760 and on to 4783 (Pik Emma, proposed). We descended down a gully on the west face. This was extremely difficult and dangerous due to the poor quality of the rock and we would not recommend this route to other climbers. Whilst the ridge line was beautiful, both our ascent and descent lines were on poor rock and did not make for enjoyable climbing. Our entire route would be graded Alpine D, but the ridge gives AD climbing due to some rock obstacles and a heavy cornice.

