

Pik Laetitia (Proposed name)

Kaichi Valley, Djangart Region near Ak Shirak

N 41.64860

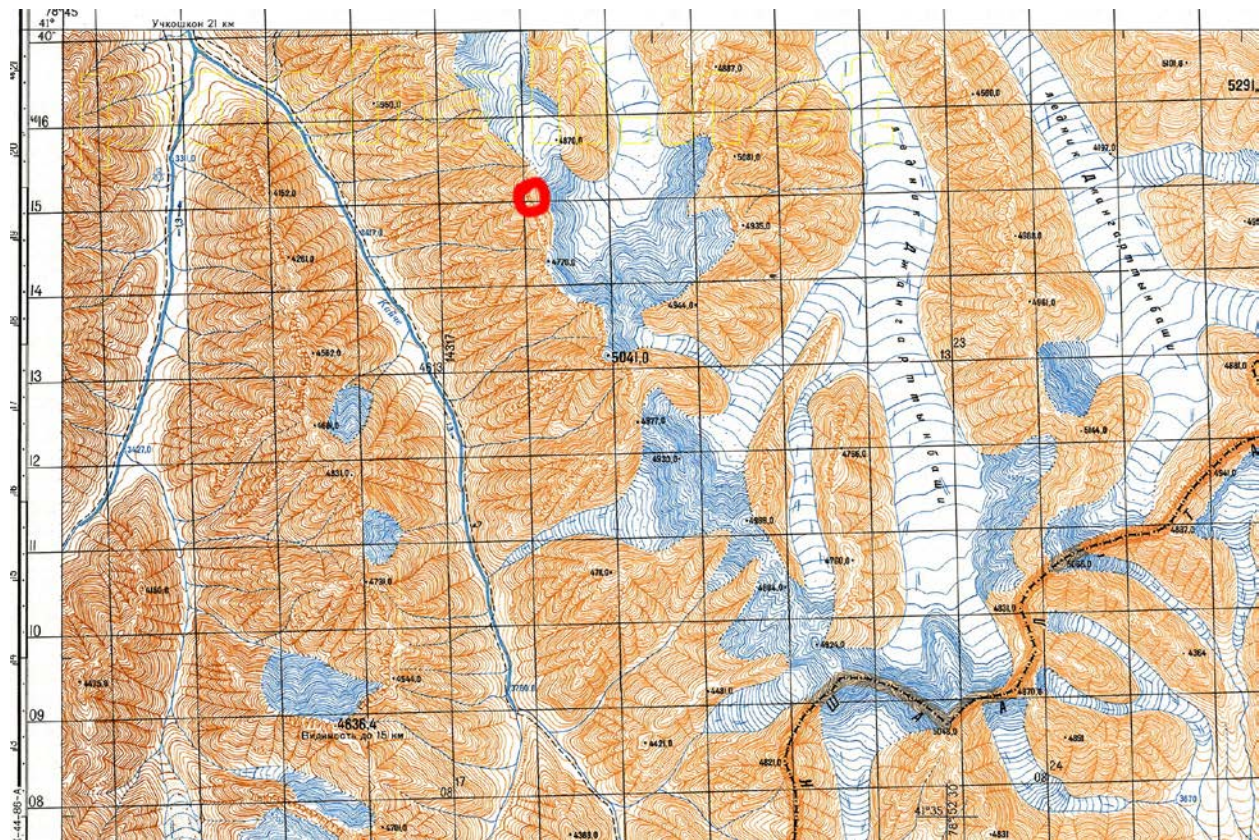
E 078.81608

Map Height 4940m

GPS Height 4952m

Alex Brighton and Richard Tremellen

5th August 2011



Phoenix Route (TD)

Our route climbed from the Kaichi valley, ascending an obvious couloir on the south west flank of the mountain and finished on the NW face. The route involved snow, rock and mixed climbing.

1. Phoenix Couloir. Snow, steepening to 65%. One small rock step. 2 Hours.
2. Leftward traverse exit of couloirs. Snow. 75%. 70m. 40 minutes.
3. Easy slopes to first rock step. 30 minutes.
4. Rock Step. 100m at Grade III / IV. 40 minutes.
5. Snow Field to summit block. Conditions dependent.
6. 60% Couloir through NW Ridge to give access to upper face. 30 minutes.

7. Upper face. Mixed climbing. Scottish Grade 5. Up to 80%. 2 Hours.

8 Hours total.



